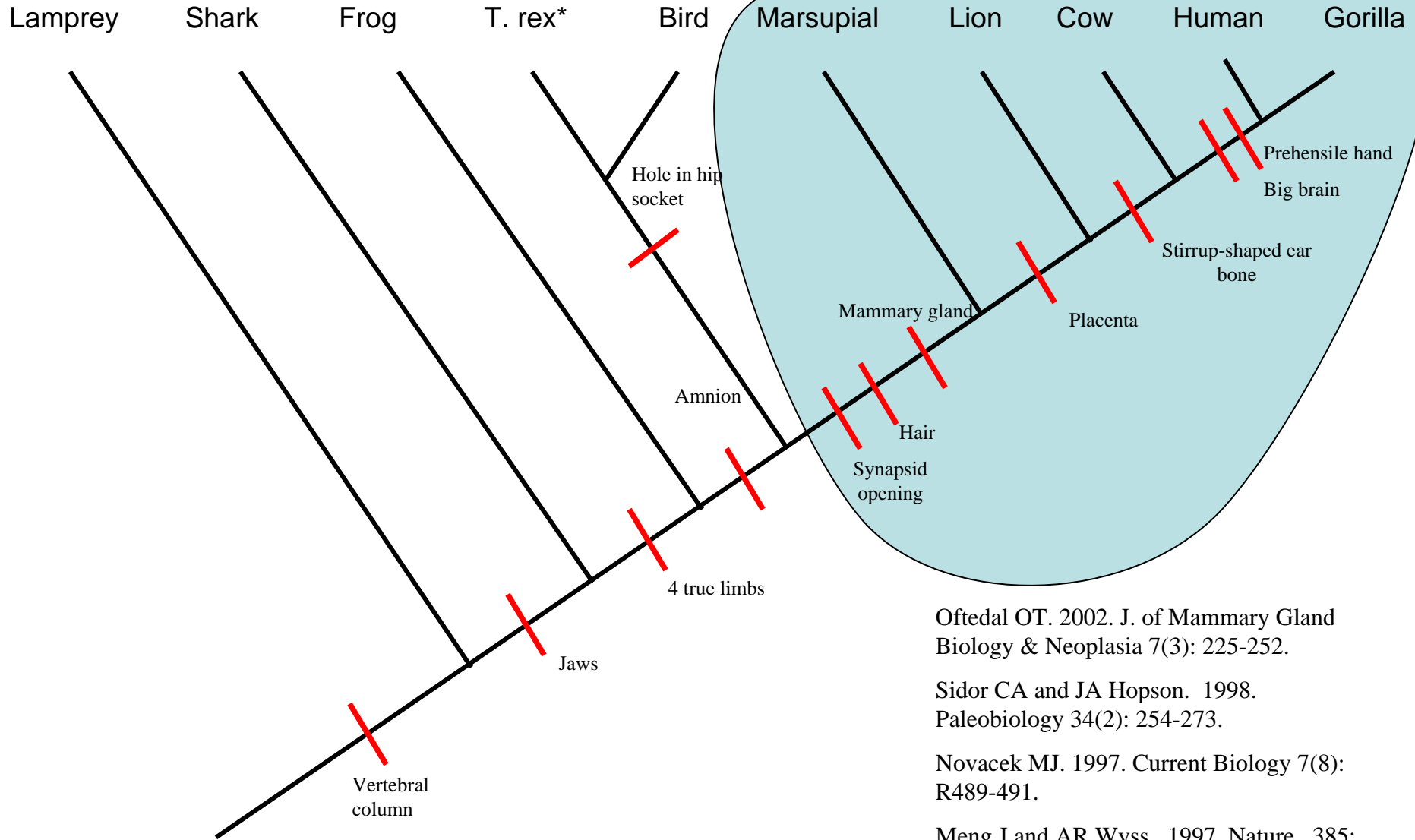


Vertebrate Cladogram



Oftedal OT. 2002. *J. of Mammary Gland Biology & Neoplasia* 7(3): 225-252.

Sidor CA and JA Hopson. 1998. *Paleobiology* 34(2): 254-273.

Novacek MJ. 1997. *Current Biology* 7(8): R489-491.

Meng J and AR Wyss. 1997. *Nature*. 385: 712-714.