

Figure 2-5. As the giraffe drinks, an adaptational package protects it from hemorrhaging in the brain:

Pressure sensors along arteries detect rise in pressure

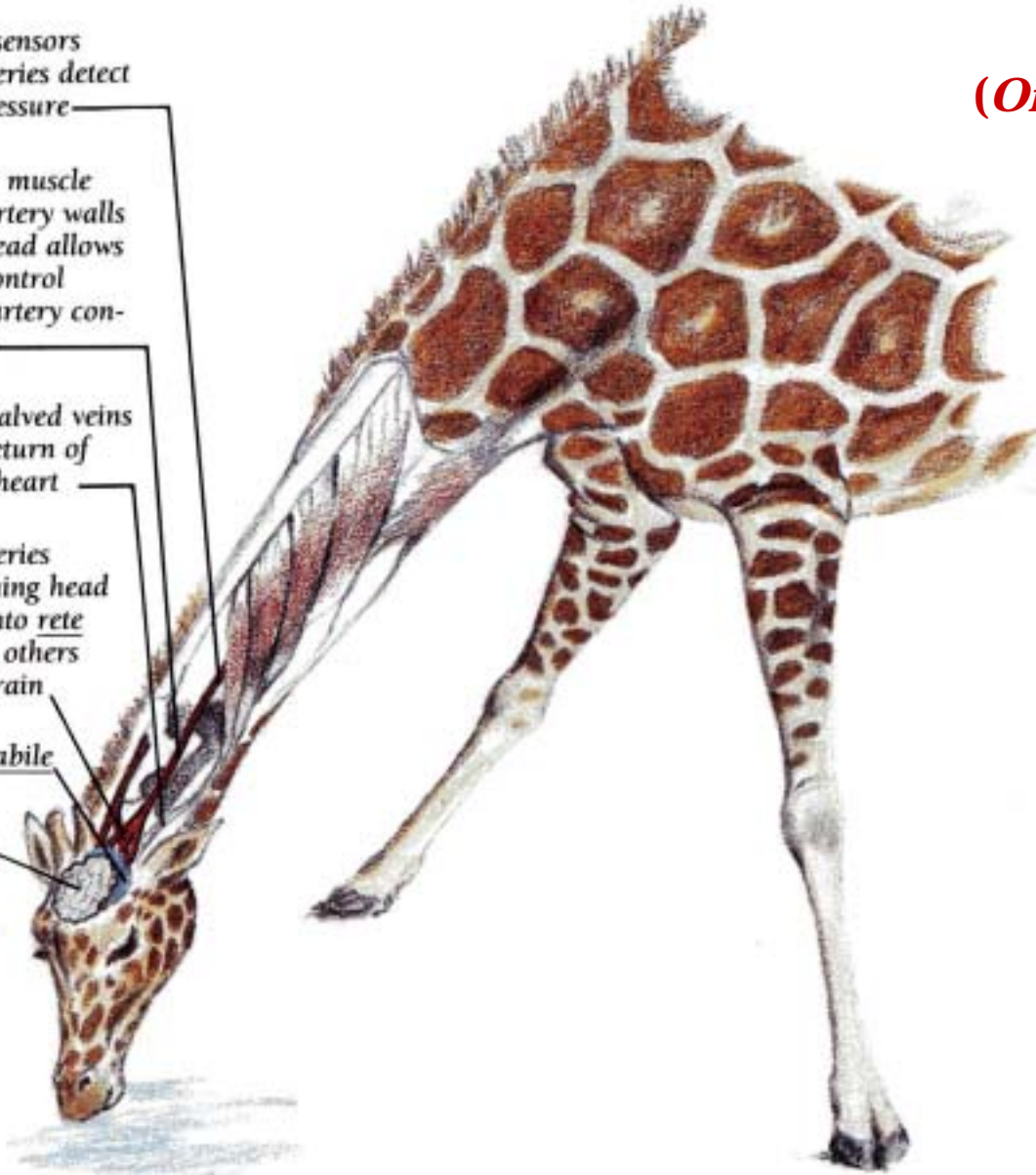
Increased muscle fiber in artery walls toward head allows greater control through artery constriction

Heavily valved veins control return of blood to heart

Some arteries approaching head branch into rete mirabile, others bypass brain

Rete mirabile

Brain



The “adaptational package” of the giraffe

(Of Pandas and People, p. 69-70)

